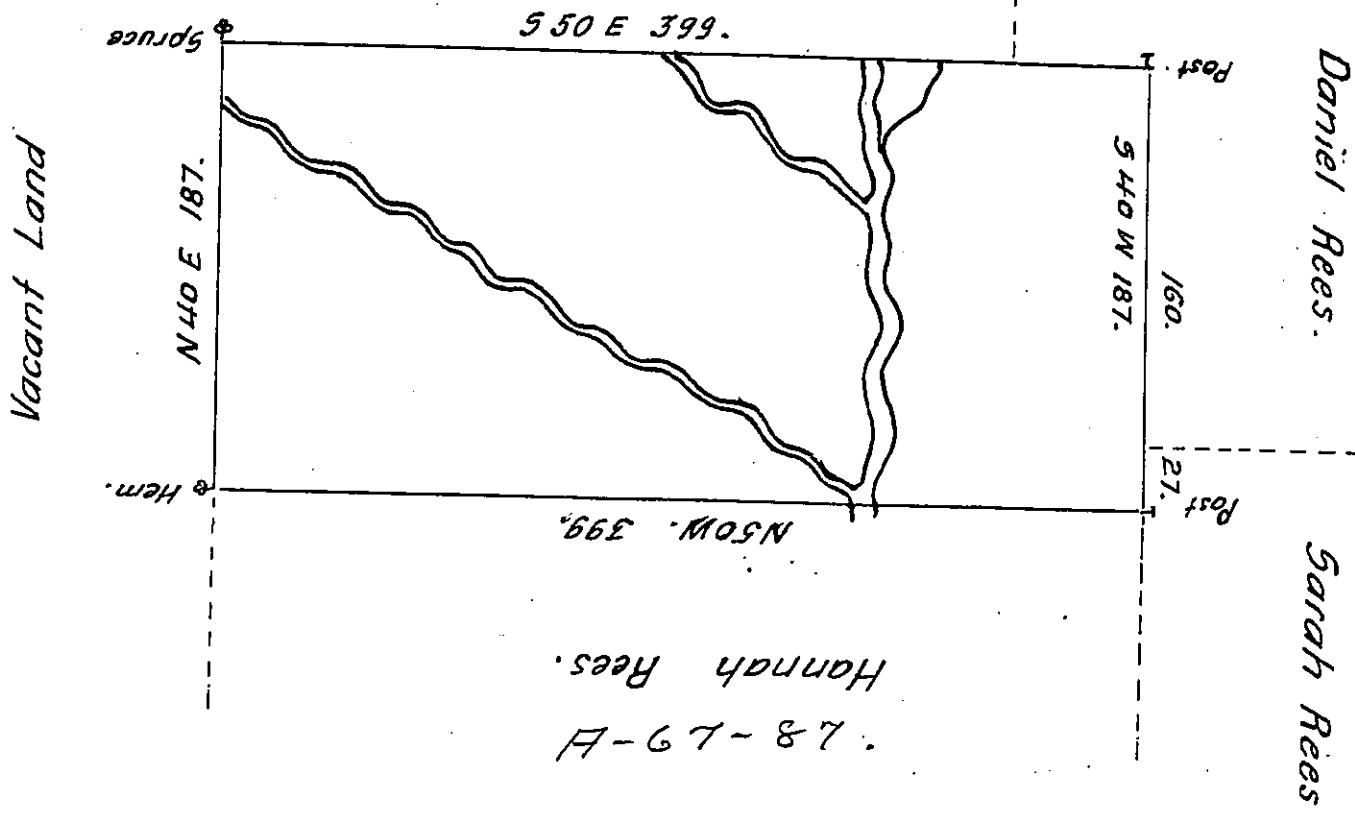


W

Vacant Land



By Virtue of a Warrant dated the 5th December 1792 Surveyed
 the 19th June 1793 to John Rees the above described tract of Land
 Situate on the Main branch of Lehi in the Counties of Northampton
 and Luzerne Containing Four hundred and thirty nine Acres, One
 hundred and forty nine perches and the allowance of Six $\frac{1}{2}$ Cent &c^a
 To Daniel Brodhead Esq: } W^m Gray D.S.
 Surv: Genl. ~ } Geo. Palmer D.S.

IN TESTIMONY that the above is a copy of the original remaining on file in
 the Department of Internal Affairs of Pennsylvania, made
 conformably to an Act of Assembly approved the 16th day of
 February, 1833, I have hereunto set my Hand and caused
 the Seal of said Department to be affixed at Harrisburg,
 this second day of August 1906

Geo. Palmer
 Secretary of Internal Affairs.